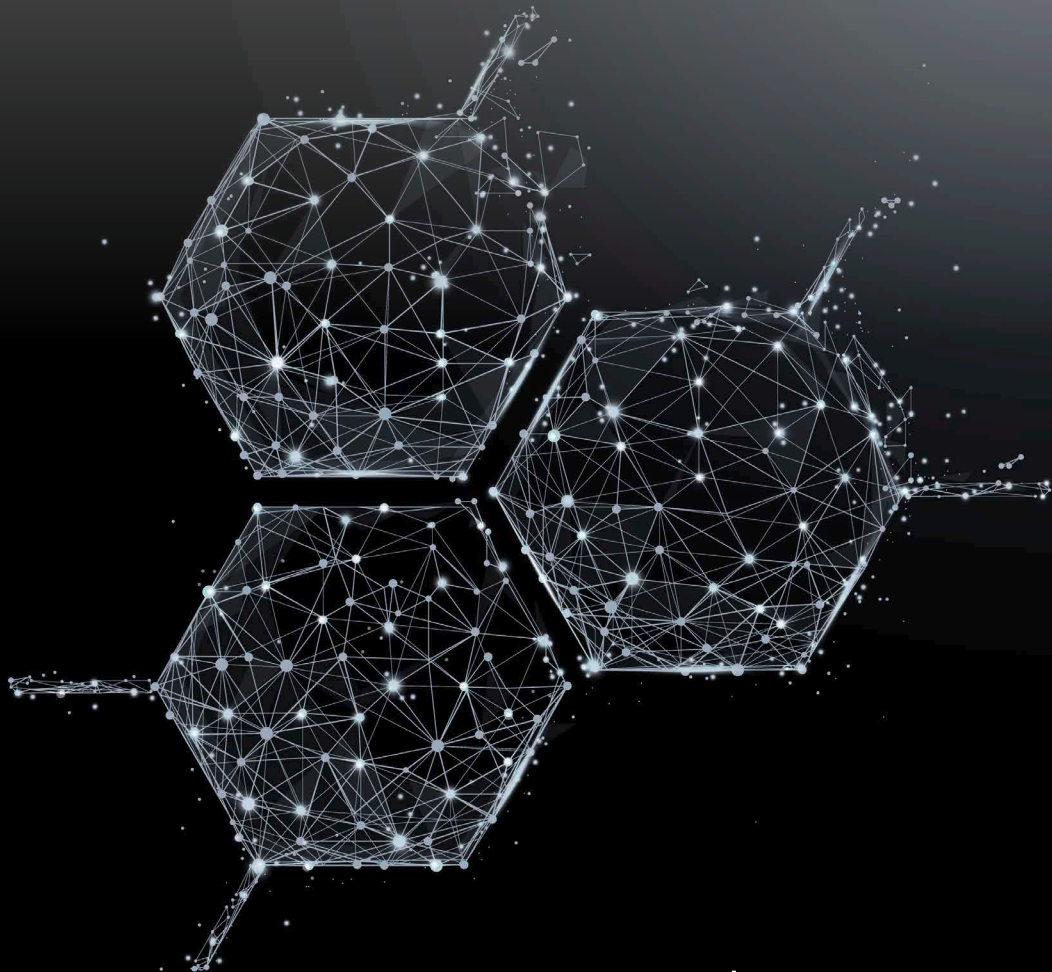


**Precise measuring instruments  
for viscosity and surface science**

**Product range 2023 / 2024**

Version 2023-04-01

# Auto dilution viscometry



Precise data. Constant values.

## Auto dilution viscometry

Our solution for auto dilution viscometry greatly simplify the practical procedure of solvent viscosity measurement, since the step of dilution takes place within the glass capillary and run under complete computer control. Contact with toxic solvent and hot media is largely avoided, necessary actions by the user are reduced to the essential minimum. All this is achieved without any loss of accuracy, flexibility and data protection of the PVS system.

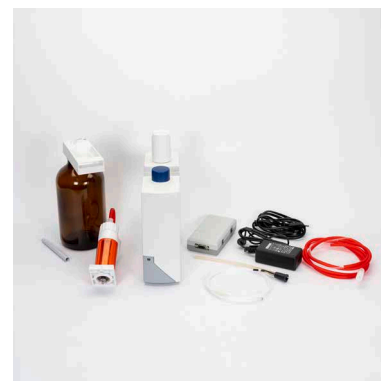
For a proper configuration of an auto dilution viscometry system, choose the suitable connecting set below. You also have to add the control plug-in unit for PVS control box (LMVZ932) as well as a stirrer system for your corresponding viscothermostat. Moreover be sure to add the suitable glass capillary viscometer together with the corresponding connection sets with transfer lock.

### LMVZ980 Connecting set dosing unit MT 1

for PVS systems without VRM 4,  
for 1 dosing unit and 1 viscometer

#### Including:

- || **Dosing set (UD 1007):** MT burette dosing unit (EBK 016), Burette top part (EBK 017-1) with dosing tube (EZ 278) and coupling adapter (EZ 277), control box (LMVZ876)
- || Connection cab large (HKA 118)



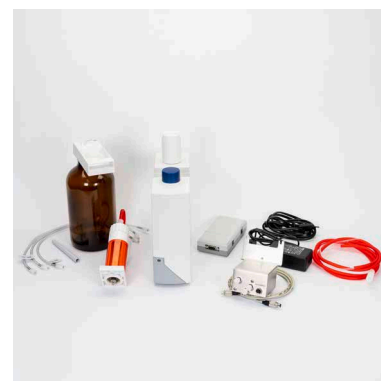
LMVZ980

### LMVZ981 Connecting set dosing unit MT 2

for PVS systems with VRM 4,  
for 1 dosing unit and max. 2 viscometers

#### Including:

- || **Dosing set (UD 1007):** MT burette dosing unit (EBK 016), Burette top part (EBK 017-1) with dosing tube (EZ 278) and coupling adapter (EZ 277), control box (LMVZ876)
- || Valve unit / overpressure safety valve (UD 652)
- || Connection cable (UK 233) for valve unit (UD 652)
- || PTFE tube VRM  $\Leftrightarrow$  transfer lock, 3 pcs. (UO 085)



LMVZ981

## Accessories for auto dilution

### LMVZ932 Control plug-in unit for PVS control box

For dilution series, for max. 2 dosing systems MT  
and 2 valve units (UD 652)

### LMZ 841 Single-place magnetic stirrer set for ET 15 S

Retrofitting possible

### LMVZ967-1 Two-place magnetic stirrer set for PV15

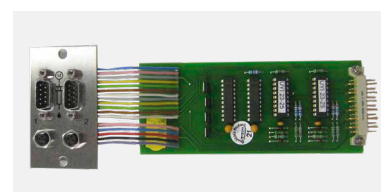
With control unit, only factory-installed

### LMVZ968-1 Four-place magnetic stirrer set for PV24

With control unit, only factory-installed

### EZ 195 PTFE magnetic stirrer bar

Small, 5x 25 mm



LMVZ932



LMZ 841





[www.lauda-scientific.de/en](http://www.lauda-scientific.de/en)

**LAUDA Scientific GmbH**  
Laudaplatz 1  
97922 Lauda-Königshofen  
Germany

Phone: +49 (0) 9343 503-340  
Fax: +49 (0) 9343 503-222  
E-Mail: [info@lauda-scientific.de](mailto:info@lauda-scientific.de)

**LAUDA**  
  
scientific